



DOOR SLIDE EXTENSION - NISSAN NV 1500/2500/3500

WARNING! READ ALL INSTRUCTIONS BEFORE BEGINNING INSTALLATION
CONFIRM MEASUREMENTS BEFORE DRILLING ANY HOLES

PARTS LIST:

1 WTD – DOOR SLIDE EXTENSION

TOOLS NEEDED:

13MM SOCKET
CUTOFF WHEEL
SAWZALL
SANDING DISC
JACK STAND
TOWEL
SHARPIE
PAINTERS TAPE

INSTALLATION INSTRUCTIONS

DISASSEMBLY**STEP 1:**

Have jack stand ready with a towel or something to cushion bottom of door so no damage occurs to your vehicle

**STEP 2:**

Remove any interior door panel if need applicable

Slide door open to gain access to 3 13mm bolts on the Factory bracket.

**STEP 3:**

Remove bolts: all 3 13mm bolts when removing the last bolt support the bottom of the sliding door. once nut is removed place bottom of door on jack stand

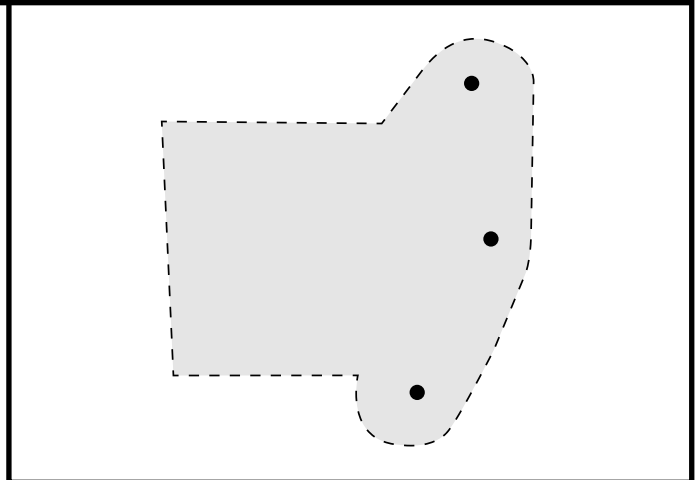


DISASSEMBLY**STEP 4:**

Once slide bracket is detached from sliding door is free remove exterior push tab plastic trim to allow factory slide to be removed

**STEP 5:**

Trace and cut out template see page 5

**STEP 6:**

Place the cut out template where the factory bracket would sit and with a marker, trace outline. This will be your guide for cutting.



DISASSEMBLY**STEP 7:**

Use a cut off wheel to cut traced outline

Note: There are 2 layers Of metal. Cut deep enough to remove first layer. Once off proceed to remove second layer to get those tight corners use a sawsaw as to not over cut

**STEP 8:**

Place new slide in place to make sure the fitment is good. Trimming may need to be required to dial in fitment

**STEP 9:**

Clean up metal edges with sand disc

Mask off with tape to prep for paint

Note: Step can be skipped if needed. Paint helps edges from rusting let dry for 15 mins



DISASSEMBLY**STEP 10:**

Bolt the 3 13mm bolts on door

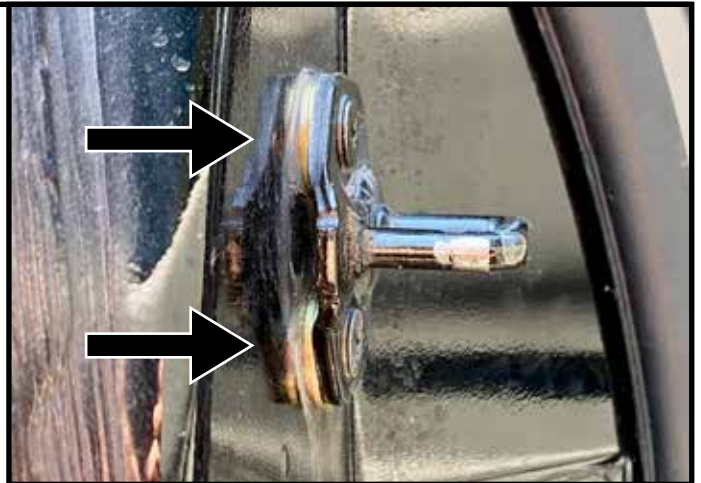
**STEP 11:**

Adjustment will be required

Make sure the door lock and striker are aligned

**STEP 12:**

Some models may require the use of shim washers to allow the striker plate to engage with the sliding door mechanism



FRONT INSTALLATION 0**STEP 13:**

Once aligned, tighten the 3 13mm bolts down

Test opening and closing a few times to ensure smooth opening and closing

**STEP 14:**

Re-install all plastic trim once the door slide is fully installed.

Your door slide extension is complete.

Note: When re-installing interior door panel trim you will need to notch door panel to ensure proper fitment

Congratulations! You have now completed your Nissan NV Door Slide Extension installation. Enjoy!



CUT OUT TEMPLATE

