



PREDATOR REAR BUMPER - CHEVROLET EXPRESS

WARNING! READ ALL INSTRUCTIONS BEFORE BEGINNING INSTALLATION
CONFIRM MEASUREMENTS BEFORE DRILLING ANY HOLES

PARTS LIST:

- 1** PREDATOR REAR TUBE BUMPER (CE-RTB-DS-P4)
- 1** TUBE BUMPER HARDWARE (CE-TB-H)

TOOLS NEEDED:

- 15MM
- 27MM
- 9/16 SOCKET/WRENCH
- 3/16 ALLEN WRENCH
- 1/2 WRENCH
- WHEEL BEARING GREASE

INSTALLATION INSTRUCTIONS

DISASSEMBLY

STEP 1:

Park van on flat ground or put on a lift

**STEP 2:**

To remove the front bumper, remove the 8 15mm bolts holding it to the frame

**STEP 3:**

The last set of 15mm bolts are on the outside of the frame rail held on by a bracket



DISASSEMBLY**STEP 4:**

Now that all bolts are removed, the stock bumper can be removed

**STEP 5:**

Place the new WTD Predator tube winch bumper in place with your new 3/8 hardware

Thread the 4 bolts on each side, but do not overtighten

**STEP 6:**

Use a floor jack with a rag over a piece of wood and jack up one side at a time until proper fitment is achieved



INSTALLATION

STEP 7:

Now tighten the 3/8 hardware with a 9/16 socket and wrench

Repeat on the opposite side



STEP 8:

If opting out on swing additions for the bumper, bolt metal discs over holes with a 9/16 socket and wrench



STEP 9:

Take swing locking bracket and set into place making sure all 4 holes line up

Place the new 3/8 hardware and tighten with 9/16 socket and wrench



INSTALLATION**STEP 10:**

Thread in locking mechanism

**STEP 11:**

Grab the two bearings and grease them liberally

Place the first bearing on the spindle and add more grease

**STEP 12:**

Take swing arm and set it in place on the spindle then put in a second bearing and add additional grease



INSTALLATION

STEP 13:

Place washer and 27mm nut on spindle and tighten until just snug

*Do not overtighten

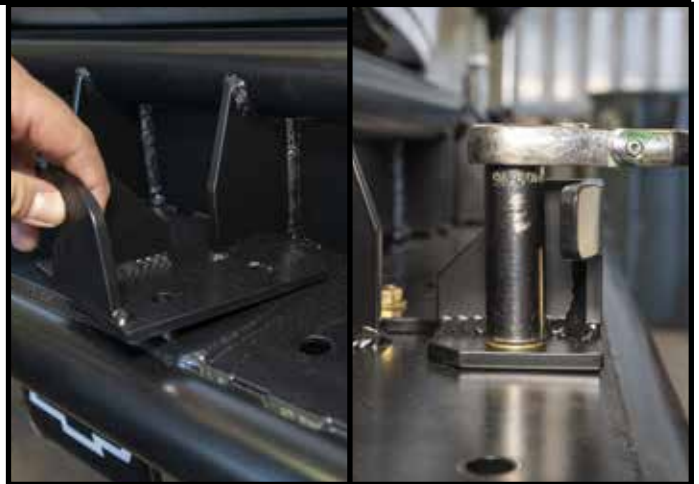
Put the dust cap in place



STEP 14:

Place swing locking bracket in place

Bolt down the three 3/8 bolts with 9/16 socket and wrench



STEP 15:

Place new 5/16 hardware in the swing latch and tighten with a 3/16 allen wrench and 1/2 wrench

Make sure to adjust the u bolt on the latch

U joints may need to readjusted as they stretch over time

Repeat steps 9-15 on the opposite side for dual swing version



INSTALLATION

STEP 16:

Congratulations! You just installed the WTD - Chevrolet Express Predator Rear Tube Bumper

