



TUBE WINCH FRONT BUMPER - 1992-2014 FORD E-SERIES

WARNING! READ ALL INSTRUCTIONS BEFORE BEGINNING INSTALLATION
CONFIRM MEASUREMENTS BEFORE DRILLING ANY HOLES

PARTS LIST:

FRONT

- 1** TUBE WINCH BUMPER
- 1** HARDWARE KIT (FES-FB-H)
 - 8** 1/2-13X3 1/2 HEX CAP SCREW
 - 8** 1/2-13 NUT
 - 8** 1/2 LOCK WASHER
 - 12** 1/2 FLAT WASHER
- 1** SKID PLATE
- 1** SKID PLATE HARDWARE KIT (FB-SP-H)
 - 5** 3/8 ALLEN BOLT
 - 5** 3/8 LOCK WASHER
 - 5** 3/8 NUT

TOOLS NEEDED:

- 3/4 WRENCH/SOCKET
- 10MM
- 21MM SOCKET
- 9/16 WRENCH
- 7/32 ALLEN WRENCH
- FLATHEAD SCREWDRIVER
- BLUE PAINTERS TAPE
- FLOOR JACK

INSTALLATION INSTRUCTIONS

DISASSEMBLY**STEP 1:**

Park vehicle on flat surface so when you line up your bumper it does not end up crooked

**STEP 2:**

Remove lower valance with 10mm socket

On the back side of the bumper there are 4 21mm bolts holding the bumper to the frame

Remove all 4 bolts

**STEP 3:**

Remove the stock bumper from the vehicle

Some bumpers have a plastic clip holding part of the headlight wiring harness

Pry plastic clip using a flathead screwdriver



INSTALLATION

STEP 4:

To help protect your paint from light to deep scratches it is recommended to tape off any exposed area the bumper may come into contact with



STEP 5:

With a second set of hands lift the bumper up to the frame. you will roughly line up the bumper before making your final adjustments



STEP 6:

With the bumper against the frame rails, place one set of hardware on both sides to hold the bumper against the frame. Make sure to not over tighten your hardware



INSTALLATION

STEP 7:

Put the rest of the hardware on finger tight.

Now is the time to adjust the bumper left and right until you find the true center and both sides are even

***Note: You can use a spacer so bumper corners are even when jacking up bumper**



STEP 8:

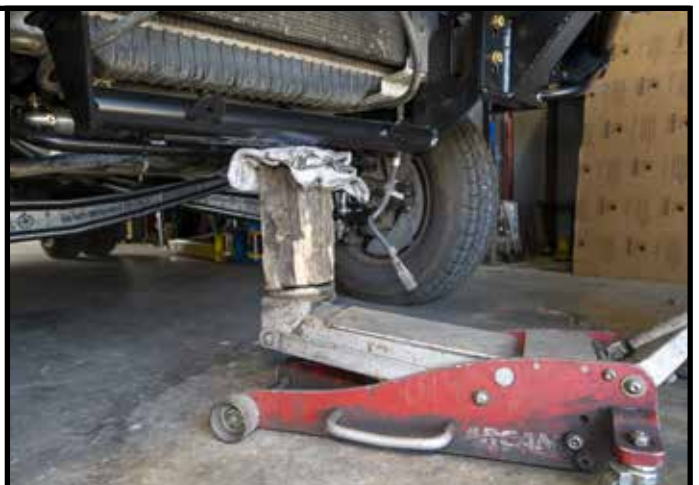
Once your bumper is straight, place a floor jack with a block of wood and a rag under the bumper.



STEP 9:

Jack the bumper up until the bumper doesn't go up any further

***Note: Be sure to place something soft on the jack to cushion the bottom of the bumper**



INSTALLATION**STEP 10:**

With a 3/4 wrench and socket tighten all 8 bolts attaching the bumper to the frame rails

**STEP 11:**

Line up skid plates with designated holes

Thread hardware to hold skid plate in place

**STEP 12:**

Using a 7/32 allen key tighten skid plate hardware



INSTALLATION**STEP 13:**

The install is complete on your WeldTec Designs Ford E-Series Tube Winch Bumper.

