



## STEALTH REAR BUMPER - CHEVROLET EXPRESS

**WARNING! READ ALL INSTRUCTIONS BEFORE BEGINNING INSTALLATION**  
**CONFIRM MEASUREMENTS BEFORE DRILLING ANY HOLES**

### PARTS LIST:

- 1** STEALTH TUBE BUMPER (CE-RTB-DS-S)
- 1** TUBE BUMPER HARDWARE (CE-TB-H)

### TOOLS NEEDED:

- 15MM
- 27MM
- 9/16 SOCKET/WRENCH
- 3/16 ALLEN WRENCH
- 1/2 WRENCH
- WHEEL BEARING GREASE

**INSTALLATION INSTRUCTIONS**

---

**DISASSEMBLY****STEP 1:**

Park van on flat ground or put on a lift

**STEP 2:**

To remove the front bumper, remove the 8 15mm bolts holding it to the frame

**STEP 3:**

The last set of 15mm bolts are on the outside of the frame rail held on by a bracket



**DISASSEMBLY****STEP 4:**

Now that all bolts are removed, the stock bumper can be removed

**STEP 5:**

Place the new WTD Stealth rear tube bumper in place with your new 3/8 hardware

Thread the 4 bolts on each side, but do not overtighten

**STEP 6:**

Use a floor jack with a rag over a piece of wood and jack up one side at a time until proper fitment is achieved



## INSTALLATION

### STEP 7:

Now tighten the 3/8 hardware with a 9/16 socket and wrench

Repeat on the opposite side



### STEP 8:

Grab the two bearings and grease them liberally

Place the first bearing on the spindle and add more grease



### STEP 9:

Take swing arm and set it in place on the spindle then put in a second bearing and add additional grease



## INSTALLATION

### STEP 10:

Place washer and 27mm nut on spindle and tighten until just snug

\*Do not overtighten

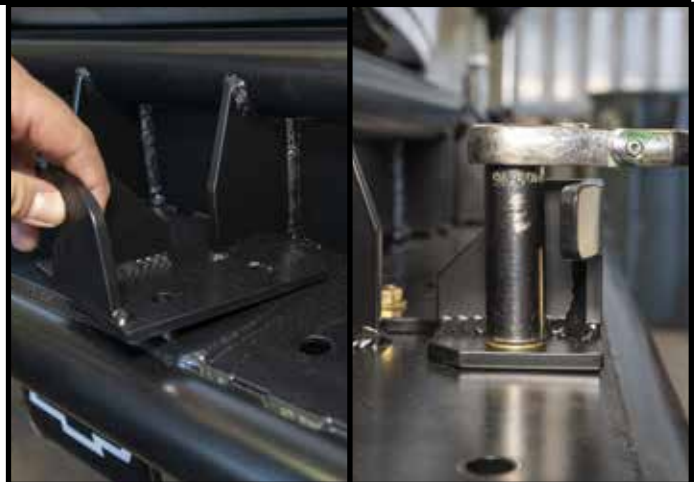
Put the dust cap in place



### STEP 11:

Place swing locking bracket in place

Bolt down the three 3/8 bolts with 9/16 socket and wrench



### STEP 12:

Place new 5/16 hardware in the swing latch and tighten with a 3/16 allen wrench and 1/2 wrench

Make sure to adjust the u bolt on the latch

U joints may need to readjusted as they stretch over time



**INSTALLATION****STEP 16:**

Congratulations! You just installed the WTD - Chevrolet Express Predator Rear Tube Bumper

