



DOOR SLIDE EXTENSION - CHEVROLET EXPRESS

WARNING! READ ALL INSTRUCTIONS BEFORE BEGINNING INSTALLATION
CONFIRM MEASUREMENTS BEFORE DRILLING ANY HOLES

PARTS LIST:

FRONT

1 DOOR SLIDE EXTENSION

TOOLS NEEDED:

FRONT:
BLUE PAINTERS TAPE
SHARPIE
JACK STAND
TOWEL
FLATHEAD SCREWDRIVER
13MM SOCKET/WRENCH
FILE
CUTOFF WHEEL
SPRAY PAINT

INSTALLATION INSTRUCTIONS

DISASSEMBLY**STEP 1:**

Have jack stand ready with towel or something to cushion the bottom of door

**STEP 2:**

Remove interior plastic panels of the sliding door

Be mindful of the small retainer clip that holds the door handle

**STEP 3:**

Two 13mm bolts will be visible on the interior sliding door panel

Remove the 13 mm bolts

This will free the stock door slider from the van



DISASSEMBLY**STEP 4:**

Remove 2 13mm bolts holding the door striker latch

Remove the stock door slider from the sliding door

Once the door is free, place the door on a cushioned jack stand

**STEP 5:**

Roll new extended door slider on track

Place new door slide extension and roll through track on van

**STEP 6:**

Cut out Chevy door extension template found on page 6

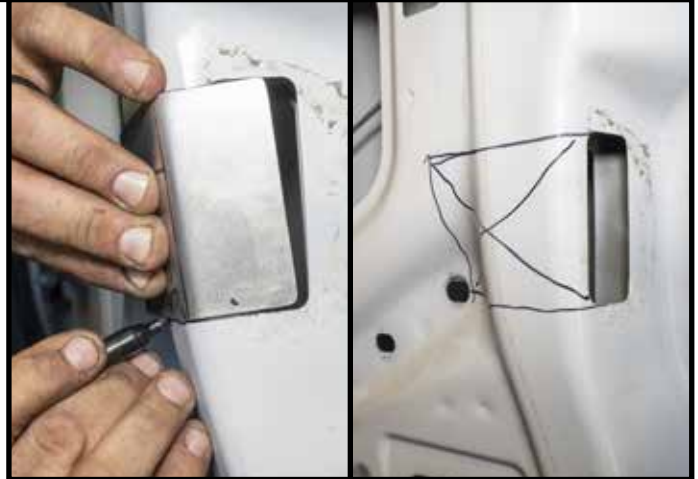
Use this template as a guide to make cuts



DISASSEMBLY**STEP 7:**

Using a marker outline template on the sliding door

***Note: Be precise**

**STEP 8:**

Using a cut off wheel, cut your marked area

***Note: Wear safety gloves and glasses. This step can cause serious injury**

**STEP 9:**

The sliding door has two wall layers of steel

Cut the first layer and remove cut steel

Following your first cut remove the remaining second layer of metal



INSTALLATION**STEP 10:**

Use a file to smooth those rough/sharp edges then paint the exposed metal to help prevent future rust

Let paint dry for 15 mins

**STEP 11:**

Lift the sliding door off the jack stand and place the long arm of the door slide extension into the detached sliding door

**STEP 12:**

Bolt the 13mm bolts in place to hold the door



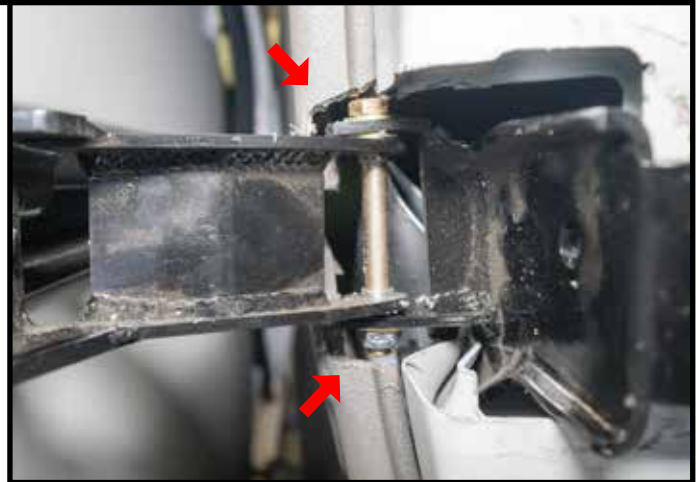
INSTALLATION

STEP 13:

Next, notch the sliding door interior panel to accommodate the new door slider extension

Once notched, align the door and find desired placement, then tighten bolts

Test the sliding door a few times to make sure it closes all the way with no gaps and is aligned before putting the interior body panels back on



STEP 14:

Once deemed good. Place interior body panels back on

Your sliding door now has the clearance for 35" tires!



TEMPLATE

